

LANSA Composer delivers business process integration technology in a visual environment so business analysts, rather than developers, can integrate and automate business processes. It is a simple and cost-effective way to get business transactions in and out of your business systems with less human effort.

What is LANSa Composer?

LANSA Composer is a design and execution platform for integrating business activities involving transport, data transformation and custom business processing. It satisfies the four key requirements of a business process integration solution:

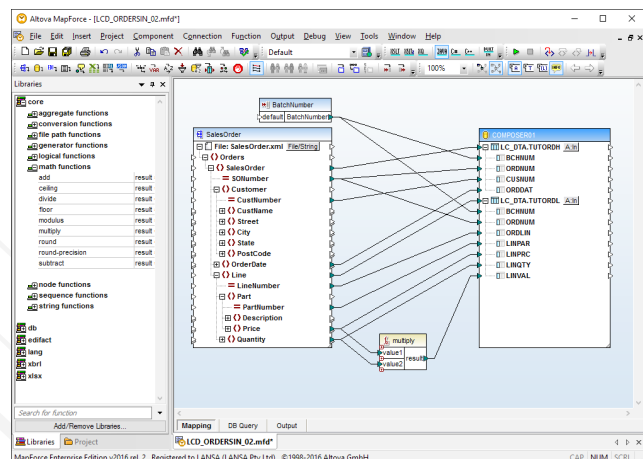
- **Transport** – moving data between source and target.
- **Transformation** – mapping data between many different formats.
- **Process Orchestration** – sequential and conditional execution of process flow.
- **Administration** – auditing, error-handling, logging, security and system operations.

LANSA Composer is compatible with all common interfaces; like Web services, EDI, FTP and email. Smart processes handle unexpected events and interrupted sequences can resume from the point of failure and run to completion without loss of data or transaction integrity.

What can LANSa Composer do?

Using LANSa Composer, business analysts assemble business processes to do the following:

- Exchange business information and transactions in common and agreed formats with trading partners, internal business units and other business applications on the same or different computing platforms.
- Transform business information between XML, EDI (UN/EDIFACT and ANSI X12), HL7 (legacy EDI and XML V3.x), XBRL, JSON, Excel, text and database formats.
- Invoke Web services, whether publicly available, published by trading partners or internal to your organization.
- Orchestrate transport, data transformation and other activities, pass variable data between them and apply conditional and structural directives to create multi-step business processes that can be executed and managed as a single unit.



Visually map data transformations using a drag-and-drop interface to transform data between different formats.

Business analysts use a simple process design canvas to wrap business logic as activities and combine them with industry standard data transformation and transport services to create business processes. Administrators and operations staff use the Document Manager to monitor and manage the transaction document flows.

LANSA Composer is built on LANSa Integrator which provides the services to support virtually every transport mechanism and data format you might encounter.

Who should use it?

LANSA Composer is intended for use by business analysts to design and implement data transformation and business process integration solutions. Orchestrating transport, data transformation and many other tasks is accomplished using a visual user interface with drag-and-drop capability. A comprehensive range of built-in activities makes it possible for non-programmers to create simple solutions to complex problems without coding.

Extend LANSa Composer for custom business process integration

LANSA Composer can be extended to encompass your custom business processing. You define custom activities that encapsulate the processing built by your developers. These custom activities are orchestrated in the same way as the LANSa-supplied transport and data transformation activities.

LANSA Composer includes a developer toolkit that integrates A2A and B2B transactions through XML, JSON and over 30 plug-in Java services. It hides the technical aspects of integration and gives the flexibility to integrate transactions with your applications. The wizard-based Web service development tools let you consume Web services or expose existing code as a Web service.

Manage transaction document processing

LANSA Composer is equipped with a built-in transaction document database and a Document Manager. The Document Manager provides the ability to monitor and interrogate inbound and outbound transaction documents. The Document Manager console shows the transaction documents associated with each inbound and outbound document flow. Using the Document Manager's search facilities, you can search the database for transaction documents by a variety of criteria, such as by trading partner, status, transaction document and content type.

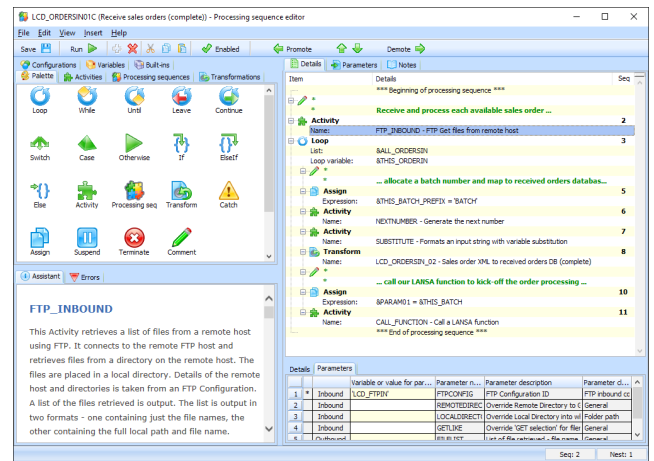
LANSA Composer includes the ability to restart a failed processing sequence from the point of failure, for example, in the event of a communication failure with a remote FTP host. This capability is exploited in the Document Manager to enable you to resume processing for failed transaction documents after diagnosing and correcting the cause of the failure.

The benefits of LANSA Composer

Automated processes reduce costs by minimizing the need for human intervention and managing exceptions.

LANSA Composer boosts productivity by providing most of the activities companies need for business process integration. With ready-made activities business analysts assemble the processes without writing program code. Assembling a process is faster than writing program code to manage the process.

Because business analysts assemble processes, changing the processes is a straightforward task. Therefore, the processes are more readily adaptable to changes in business activity. In contrast, hard coded processes require developers to write new code and/or rewrite existing code before the process can change. Processes are less adaptable when more people are involved in implementing the changes.



Using the processing sequence editor you can easily define business activities without coding.

Features

Powerful visual mapping tool

- Drag-and-drop, graphical user interface for transformation mapping
- Transform information between external and internal formats as it is received or before it is sent
- Extract information from corporate databases to send as XML, EDI and other document formats to trading partners
- Transform incoming XML, EDI and other document formats, and write directly to your database for processing by existing applications, and much more
- Multilingual support for user interface

Simple but powerful process orchestration capability

- Define processing sequences visually using the Processing Sequence Editor – without coding
- Processing sequences combine activities and data transformation maps with processing directives such as loops and conditions
- A complete multi-step business process can be defined, executed and managed as a single processing unit of work, without programming
- Restart processing sequences from any point

Ready-to-use activities

- FTP and HTTP transport
- POP3 for inbound and SMTP for outbound email
- SMS (mobile phone text messages)
- Inbound and outbound transactions via message brokering systems such as IBM WebSphere MQ
- SQL database operations
- Watch folders, data queues and message queues
- File management
- Transaction document management
- Variable manipulation
- Processing and data transformation

- Zip/Unzip
- Call existing 3GL, Java and other programs or execute Ruby scripts
- Drive 5250 applications automatically when coupled with aXes

Configurations and trading partner definitions

- Configurations encapsulate the variable information required for common transport activities and for database connections
- Define source and target identification and addressing as well as security credentials
- Variable transport and database configurations and trading partner definitions give maximum flexibility
- Create as many configurations as you need to define the information to connect or communicate with other parties

Extensible and customizable

- Activities, along with data transformation maps, implement specific business functions that are executed by processing sequences
- Use immediately with the supplied activities to exchange business information such as orders and invoices with other parties, including external trading partners and internal business units, using standard protocols
- A simple interface is provided to enable you to „wrap“ your specific business logic as custom activities
- Map data between disparate formats including: XML, EDI (UN/EDIFACT and ANSI X12), HL7 (legacy EDI and XML V3.x), XBRL, SAP iDOCS, IATA PADIS, Microsoft Excel 2007 (OO XML files), text files, Web service functions and a wide range of databases including IBM DB2 and Microsoft SQL Server
- Execute LANSA functions on remote systems

Administration and operations

- Browser-based console to monitor processing sequence logs and execution for errors and operator intervention
- Document Manager for monitoring inbound and outbound transaction documents

Visit www.lansa.com for more information

THE AMERICAS

Headquarters – Chicago, USA
Tel: +1 630 874 7000
Email: info@lansa.com

EUROPE

Headquarters – London, UK
Tel: +44 1727 790300
Email: info@lansa.co.uk

ASIA PACIFIC

Headquarters – Sydney, Australia
Tel: +61 2 8907 0200
Email: info@lansa.com.au

